



## INTESTINAL PARASITES OF DOGS

### TAPEWORMS



Tapeworm segments

- Tapeworms are carried by fleas and small mammals (rabbits/mice).
- Your dog becomes infected with tapeworms when it ingests the flea or small mammal that is carrying the tapeworm.
- Diagnosis of tapeworms is made most commonly by the owner seeing the segments of the worm in their pet's stool, or on its fur or bedding.

### ROUNDWORMS

- Roundworms are very common in young puppies. 90-100% of all puppies may be infected with roundworms.



Adult Roundworms

- Puppies can be infected directly from their mothers, either through the placenta or in the milk.
- The female roundworm lays eggs which are passed in the feces. Your dog can also get roundworms by ingesting these eggs.
- Small rodents may also ingest the eggs. Your dog could be infected by consuming an infected rodent.
- Roundworms look like spaghetti, and can be very long and coiled.
- ROUNDWORM EGGS CAN BE INGESTED BY HUMANS (ESPECIALLY CHILDREN). THEY CAN CAUSE SERIOUS DISEASE.**

### HOOKWORMS



Hookworm egg magnified 400 times

- Hookworms are very small, they can not be seen in a dog's stool.
- We diagnose hookworms by finding the female's eggs with a microscope.
- Hookworms can be passed to a puppy through the placenta and also from the mother's milk.
- Dogs can also get hookworms by ingesting the egg's that are passed in the stool of an infected dog. The larvae of the hookworm

can even penetrate the skin and cause infection.

**-HOOKWORM LARVAE CAN PENETRATE HUMAN'S SKIN AND CAUSE SERIOUS ILLNESS.**

### WHIPWORMS

- Whipworms are very small, they can not be seen with the naked eye.
- We diagnose whipworms by finding the eggs with a microscope.



Whipworm egg magnified 400 times

- Dogs become infected with whipworms from the stool of an infected dog.
- Whipworm eggs are very tough, they can survive in the soil for years.
- It is not always easy to find whipworm eggs in a dog's stool. Sometimes we treat for whipworms because of a dog's symptoms.
- The whipworm larvae may actually "hibernate" in the intestinal lining and come out later to cause infection.

### GIARDIA

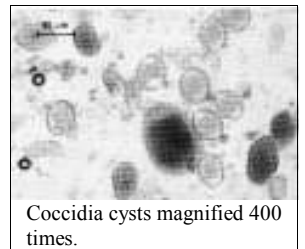


Giardia cyst magnified 400 times

- Giardia is a microscopic, protozoal parasite.
- Dogs are exposed to the "cysts" that are passed from an infected dog's stool.
- Giardia can also be found in standing water or other very damp places.
- We diagnose giardia by finding it in a stool sample with a microscope.
- HUMANS CAN ALSO BE EXPOSED TO GIARDIA FROM WATER SOURCES OR FROM IMPROPERLY HANDLING DOG**

### COCCIDIA

- Coccidia is another protozoal parasite that can infect dogs.
- Cysts can be passed from an infected dog in their stool.
- Your dog may be infected by consuming these cysts.
- Small rodents may ingest these cysts. Your dog could be infected



Coccidia cysts magnified 400 times.

**-DIFFERENT WORMS ARE TREATED DIFFERENT WAYS. WE OFTEN NEED TO USE A WORMER MORE THAN ONCE TO EFFECTIVELY KILL THE WORMS. IF YOU HAVE OTHER DOGS THEY MAY ALSO NEED TO BE DE-WORMED .**

